



Small Learning Communities (SLCs)

Kearney Public Schools K-12 Framework for Career Education



“Knowledge is power. You can't begin a career, for that matter even a relationship, unless you know everything there is to know about it. “

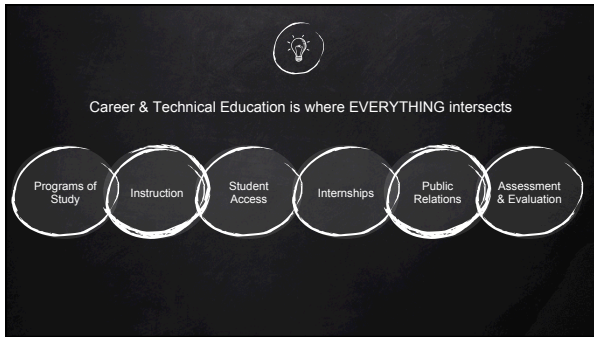
Randeep Hooda

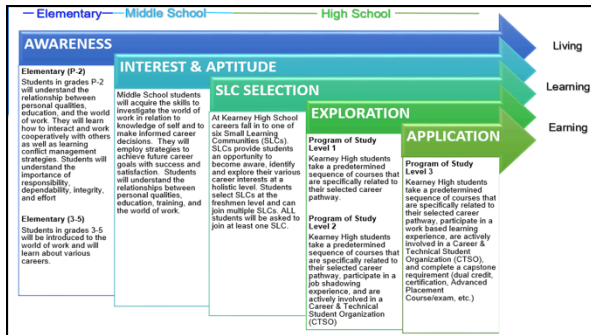
Purpose of Small Learning Communities

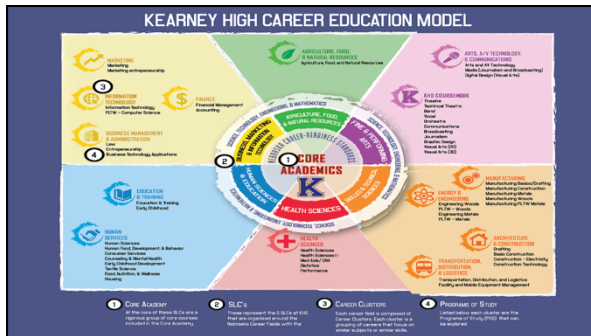
- An intentional and supportive educational model that delivers robust career education to ALL KHS students.
- An engaging student centered framework that makes their high school courses relevant to their strengths and career interests and career code











1.

PROGRAMS OF STUDY
 Strategic Essentials

- Define SLC Scholars/Honor Cords
- Establish robust dual credit & certifications
- Track students in Infinite Campus
- Research potential expenditures

Communicate continually with Nebraska Department of Education
 Create appropriate documentation

**Programs of Study - Level 3
Implementation Highlights**

- 17 Students participating in Bearcat Design Capstone
- 7 Students placed in an Internship at Blueprint Engines
- 6 Students in a retail work environment - Bearcat Corner (School Store)
- 28 Students in a Clinical experience in Health Science II - Good Samaritan
- 40 Students in new Introduction to Education Course for dual credit
- 13 Students in Elementary Education extended Field Experience
- Addition of more rigorous Political Science taken
- CCC Welding Certification and Advanced Manufacturing certification
- Project Search Students

**Programs of Study - Level 3 (for Fall 2017)
Implementation Highlights**

- Add a dual enrollment Political Science course taken on UNK Campus
- Offer a Certification in Advanced Manufacturing and Welding
- Provide opportunity for completion of CNA Certification at CCC on our schedule
- Increase the number of internships and other work-based learning experiences using the defined model

2.

**INSTRUCTION
Strategic Essentials**

- Strengthen the career component of advisement curriculum
- Provide advanced training for teachers
 - Contextual learning
 - Career Coaching through advisement
- Align curriculum to the Nebraska's career readiness standards
- Counselors, Business, Industrial Technology, Family and Consumer Science

INSTRUCTION
Implementation Highlights

Facilitated MS/HS Alignment
NDE visits by the Nebraska Career Education specialists

Scheduled weekly collaboration time on Wednesday

Revised course offerings (programs of study) in the course description book

3.

STUDENT ACCESS
Strategic Essentials

Identify barriers to student access
Transportation, uniforms and other resources, tuition expenses

Determine the scope of the budget
Explore funding sources

Create an awareness to all stakeholders

STUDENT ACCESS
Implementation Highlights

Education class (transportation)
40 Students were placed in our elementary and middle schools their 5 observations (Field Experience)


Advisement for ALL 1,430 Students

College Fair hosted at KHS for all students to participate - 950

College Access Grant opportunities for ALL students

"Celebrate Today, Own Tomorrow"
Wednesday, February 15th

| | | | |
|---|---|--|--|
| PARTNERSHIPS Local State ✕ Advisory ♦ 123 ✕ Chamber ♦ 1200 ✕ Business ♦ 24 ✕ Secondary ♦ 8 | ACCESS Students 1430 ✕ Exposure ✕ Access ✕ Customized ✕ Relevant | INSTRUCTION Professional Dev 100 Teachers ✕ Contextual Learning ✕ Career Coaching ✕ Advisement | PUBLICITY KPS Publications ✕ Newsletter ✕ Online ✕ Chamber ✕ Press |
|---|---|--|--|



INTERNSHIPS

Strategic Essentials

- Establish educational collaborative team (Post-Secondary Institutions)
- Clarify and strengthen the roles of the Advisory Teams
- Define and implement K+ Partners
- Coordinate local, state and federal policies to maximize investments and reduce inefficiencies
- Articulate the customized learning needs to KPS Foundation and other charitable organizations

INTERNSHIPS

Implementation Highlights

| YEAR | STUDENTS |
|-------------|----------|
| 2014 - 2015 | 76 |
| 2015 - 2016 | 153 |
| 2016 - 2017 | 204 |

2015-2016
Clinical Nutrition
Personal Finance

2016-2017
Introduction to Education
Statistics
Human Geography

More coming 2017 - 2018

**UNIVERSITY OF NEBRASKA AT KEARNEY
Implementation Highlights**

- Provided inservice for dual enrollment 16 teachers
- Assisted with during summer stampede for dual enrollment
- Developing a summer workshop training for all dual enrollment teachers
- Pursuing dual enrollment day for high school students
- Hosted Fall College Fair at Kearney High School
KHS students had access to 40 Colleges, Universities, & Military recruiters

**ADVISORY TEAMS
Implementation Highlights**

- Guest Speaker days in December during Advisement
Exposure for 1,431 to each of the 7 SLC Career Fields
- February Business and Industry Tours
4 Business and Industry Tours in each of the 7 SLCs = 28 tours
- School Store support from Gap Corp (Old Navy)
\$750 grant
- FFA coaching / training for students
- Hospital bed for Health Care Science room
7 Blueprint Engines Interns

5.

**PUBLIC RELATIONS
Strategic Essentials**

- Solicit input and establish lines of communication
- Develop a strong, strategic, ongoing communication plan
- Customized to each stakeholder group

PUBLIC RELATIONS
Implementation Highlights

Host a Parent Engagement Event during Advisement Conferences in March
Partnering with our Advisory Teams (e.g. More information on dual enrollment, college planning, work opportunities for students entering workforce, etc.)

Nebraska Loves Public Schools Campaign - February 9th

6.

ASSESSMENT & EVALUATION
Strategic Essentials

Research what to track and how to track it

Determine how are we going to use the data
Tailor our data systems to enable the tracking

ASSESSMENT & EVALUATION
Implementation Highlights

Working with UNK on developing a program evaluation model

Working with UNK on developing a database to monitor KHS students to see if they complete a major in their identified program of study